

mat
Mat Wilken · Graphic Designer





SLOW YOUR DINNER DOWN



4139 S. NATURE CENTER WAY, SPRINGFIELD, MO 65807
SAT: 730-100 THU: 430-730 LOVEYOURFARMER.COM
FACEBOOK: FARMERS MARKET OF THE OZARKS



WAKE UP TO LOCAL FOOD



4139 S. NATURE CENTER WAY, SPRINGFIELD, MO 65807
SAT: 730-100 THU: 430-730 LOVEYOURFARMER.COM
FACEBOOK: FARMERS MARKET OF THE OZARKS



1863 BATTLE OF SPRINGFIELD: MARMADUKE'S RAID



PROGRAM GUIDE

POWERFUL FORCES WERE IN PLAY IN 1863... In early January, Confederate troops riding north from Arkansas entered Missouri with several goals in mind: disrupt Union operations in southwest Missouri, destroy or capture Union supplies, gather Confederate recruits and force Union troops in northwest Arkansas to retreat back to defend Missouri. The raid lasted 16 days and resulted in the destruction of several Union garrisons and battles at Springfield and Hartville.

On the national stage, President Abraham Lincoln issued the Emancipation Proclamation on January 1, 1863. This freed slaves in the states rebelling against the Union. Missouri was considered "loyal" and not in rebellion; thus her slaves were exempt from the proclamation. Emancipation came to Missouri Slaves two years later.

Join the Library in commemorating the 150th anniversary of the Emancipation Proclamation, Marmaduke's Raid and the resulting battles of Springfield and Hartville through special events, exhibits and historic site tours.

DECEMBER 31, 2012–JANUARY 31, 2013



THE BATTLE OF HARTVILLE

Friday, January 13, at 6:30 p.m.
Following the clash at Springfield, Union and Confederate forces met again three days later, at Hartville. The ensuing battle challenged an untried Union commander facing overwhelming odds. Local history associate Michael Price explores the impact of Marmaduke's Raid in Missouri.



ON SLAVERY'S BORDER: ENSLAVED FAMILIES AND COMMUNITIES IN MISSOURI, 1815-1865
Friday, January 13, at 7:30 p.m.
Dr. Diane Mutti Burke, history professor, looks at small-scale slavery in households and neighborhoods in Missouri counties along the Mississippi and Missouri rivers. She examines topics such as the economics of slavery and relations between slaves and owners.

DRIVING TOUR OF THE BATTLE OF SPRINGFIELD

Saturday, January 12, at 10 a.m. and 2 p.m. and Sunday, January 13, 2 p.m.
Take a bus tour of downtown Springfield to see key sites related to the Battle of Springfield. Board at the Library Center with Library local history associate John Rutherford. Registration limited to 11 per tour; call 882-0714.

FILM PRESENTATION: "RIDE WITH THE DEVIL" WITH SCHOLARLY LED DISCUSSION

Saturday, January 12, at 2 p.m.
Few places in America were as divided during the Civil War as Missouri. After a presentation of the 1999 Ang Lee film, "Ride with the Devil," history professor Dr. Jeremy Neely will discuss how slavery, secession and emancipation sharpened these divisions along the volatile Missouri-Kansas border, and the guerrilla warfare that ensued.



ALF BOLIN, NOTORIOUS BUSHWHACKER

Saturday, January 12, at 6:30 p.m.
Local historian Wayne Glenn will discuss the Alf Bolin and his evil deeds. He has uncovered original documentation regarding the Bolin family in Stone and Christian counties, and their connections to other prominent families.

JOHN R. KELSO, BUSHWHACKER HUNTER

Saturday, January 12, at 7:30 p.m.
Local historian Teresa Hernandez offers an in-depth look into the sophisticated and troubled mind of one of Missouri's most loyal and successful guerrilla fighters and Union officers. In his own words he describes not only the Civil War battles he fought, but the battles within his personal life.



THE HOLMES BRIGADE MINSTRELS

Sunday, January 13, at 2 p.m.
The Holmes Brigade Minstrels once played around the campfire to entertain others, but soon became favorites for National Park Service events. Listen as they recreate an authentic historical experience of Civil War camp life.

- (January 9) Merrill's forces marched from Houston, Mo. towards Hartville, Mo.
- (January 9) Shelby's Brigade retreated east attacking Sand Springs and Marshfield, Mo.
- (January 10) Shelby and Porter's Brigades united east of Marshfield.
- (January 11) Confederate and Union forces raced towards Hartville; Battle of Hartville
- (January 12) Confederate forces retreated to Batesville, Ark.

- Union forces set fire to 10 houses along South Street, splitting the 12th Missouri Cavalry which advanced on Fort No. 4 and 18th Iowa Infantry.
- Col. Emmett MacDonald's 11th Missouri Cavalry and 5th Missouri Cavalry attacked the 72nd Enrolled Missouri Militia through "Dutch Town," causing a retreat.
- Union sick and wounded formed the Quinine Brigade on the Springfield Square and rushed south to secure the center of the Union line.

- The 72 Enrolled Missouri Militia and 18th Iowa Infantry regrouped at College Street and formed a counter attack.
- The 5th Missouri Cavalry shifted west and attacked the right-center of the Union line.
- The 4th and 3rd Missouri State Militia Cavalry rushed west and attacked the 5th Missouri Cavalry.
- Five companies of the 18th Iowa Infantry arrived from Fort No. 1, west of town, and reinforced the Quinine Brigade.

Col. Samuel Merrill's Union relief force camped for the night.

In the early morning darkness of January 11, Porter began moving toward Hartville. Porter stumbled upon the Union picket line, alerting both sides to their close camping proximities and igniting a six-mile race to the crossroads town of Hartville. Knowing of an alternate route, Porter and Marmaduke bypassed Merrill's force.

PHOTO EXHIBIT: "CIVIL WAR IN SPRINGFIELD, MISSOURI"

Park Central Branch Library
128 Park Central Square
January
A collaborative exhibit from the Library and Wilson's Creek National Battlefield depicting soldiers, civilians and artifacts from Springfield during the Civil War.



Historic images provided by Wilson's Creek National Battlefield and the Library of Congress.



1863 BATTLE OF SPRINGFIELD: MARMADUKE'S RAID

Experience the drama of the Battle of Springfield
December 31, 2012–January 31, 2013

SCHEDULE OF EVENTS

- Quinine and Courage: Marmaduke's Raid on Springfield**
Dr. William Piston and John Rutherford observe the 150th anniversary of the battle.
Tuesday, January 8, 2013, at 6:30 p.m.
Presidential Address: Emancipation and Slavery in Missouri
Fritz Klein brings the personal and presidential perspectives of Lincoln to life.
Wednesday, January 9, 2013, at 6:00 p.m.
- Artifacts from the Battle of Springfield**
Debra Wood and Alan Chilton show artifacts from Wilson's Creek National Battlefield.
Thursday, January 10, 2013, at 6:30 p.m.
- The Lucy Chronicles**
Jonathan Herbert presents a collection of short dramas in dramatic readings.
Thursday, January 10, 2013, at 7:30 p.m.
- Racing to the Crossroads: The Battle of Hartville**
Michael Price explores the impact of Marmaduke's Raid in Missouri.
Friday, January 11, 2013, at 6:30 p.m.
- On Slavery's Border: Enslaved Families and Communities in Missouri, 1815-1865**
Dr. Diane Mutti Burke look at small-scale slavery in Missouri households.
Friday, January 11, 2013, at 7:30 p.m.
- Driving Tour of the Battle of Springfield**
Join John Rutherford on a downtown tour of Civil War Springfield.
Saturday, January 12, 2013, at 10 a.m. and 2 p.m. and Sunday, January 13, 2013, at 2 p.m.
- Film presentation: "Ride with the Devil" with Scholarly Led Discussion**
Dr. Jeremy Neely discusses guerrilla warfare related to the film.
Saturday, January 12, 2013, at 2 p.m.
- Alf Bolin, Notorious Bushwhacker**
Wayne Glenn discusses the origin of Alf Bolin and his evil deeds.
Saturday, January 12, 2013, at 6:30 p.m.
- John R. Kelso, Bushwhacker Hunter**
Teresa Hernandez offers a look into the mind of one of Missouri's most ruthless soldiers.
Saturday, January 12, 2013, at 7:30 p.m.
- The Holmes Brigade Minstrels**
An authentic historical music experience of Civil War camp life.
Sunday, January 13, 2013, at 2 p.m.

All events held at the Library Center
4653 South Campbell Avenue • Springfield, Mo. 65810 • 417-882-0714

1863 BATTLE OF SPRINGFIELD: MARMADUKE'S RAID

Battle Summary:
Date of Battle: January 8, 1863
Result: Union Victory
Union Troops Engaged: 2,099
Confederate Troops Engaged: 1,870
Casualties: 165 Union; 150 Confederate

On December 31, 1862, Gen. John Marmaduke led his Confederate cavalry division north from Arkansas, commencing a 16-day raid into Missouri. On January 6, 1863, Marmaduke learned that Springfield's supply depot was poorly defended and its destruction would cripple the Union's Army of the Frontier.

Union scouts discovered Marmaduke's troops, and they were able to warn Springfield's garrison commander, Gen. E. B. Brown, of the impending attack. With less than one day to organize the town's defense, Brown ordered the Enrolled Missouri Militia into service; he also armed sick and wounded soldiers.

Attacking Springfield from the south, Confederates under Col. Joseph Shelby directed successive assaults on the Union battle line. The 12th Missouri Cavalry attacked the Union right center, overrunning the Iowa Infantry. The 72nd EMM was also routed on the west flank, but the Union forces rallied at College Street and, with reinforcements, launched a counterattack. The Confederates made one last assault on Fort Number 4, but the Union line held. Unable to capture the town, Marmaduke withdrew his troops and retreated east from Springfield on the morning of January 9.

Recommended Sources:
Marmaduke's First Missouri Raid by Daniel Plaster
Quinine and Courage by Garrett Piston and John Rutherford in "Springfield's Home Histories"
Community & Conflict Collections: www.wilsonscreek.org
Missouri Militia, 4th District, Order Book
Historical Society of Missouri
Hington Alexander Re Book & Manuscript
Columbia University
Library: www.familylibrarydistrict.org



1863 BATTLE OF SPRINGFIELD: MARMADUKE'S RAID

Experience the drama of the Battle of Springfield
December 31, 2012–January 31, 2013

MARMADUKE'S RAID THROUGH MISSOURI AND ARKANSAS



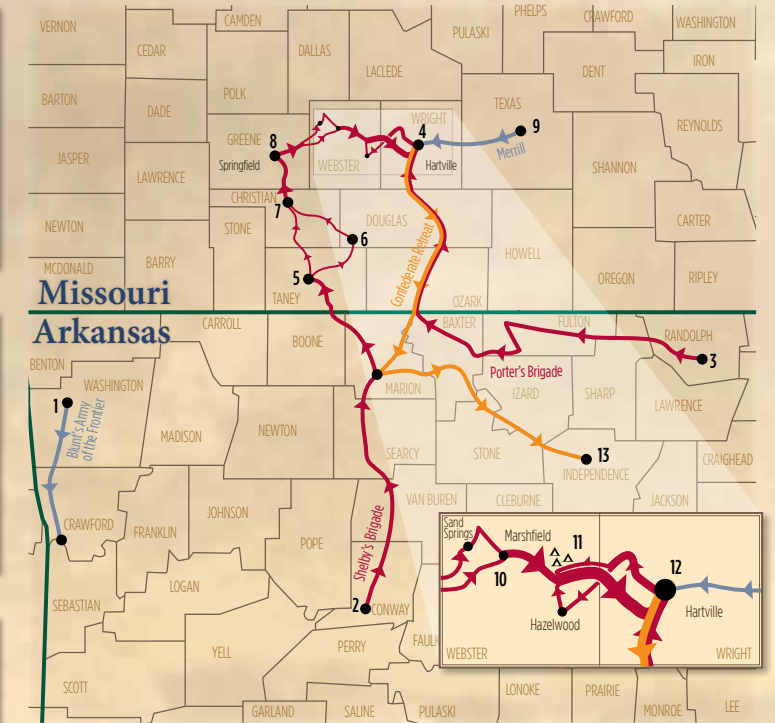
Gen. John S. Marmaduke



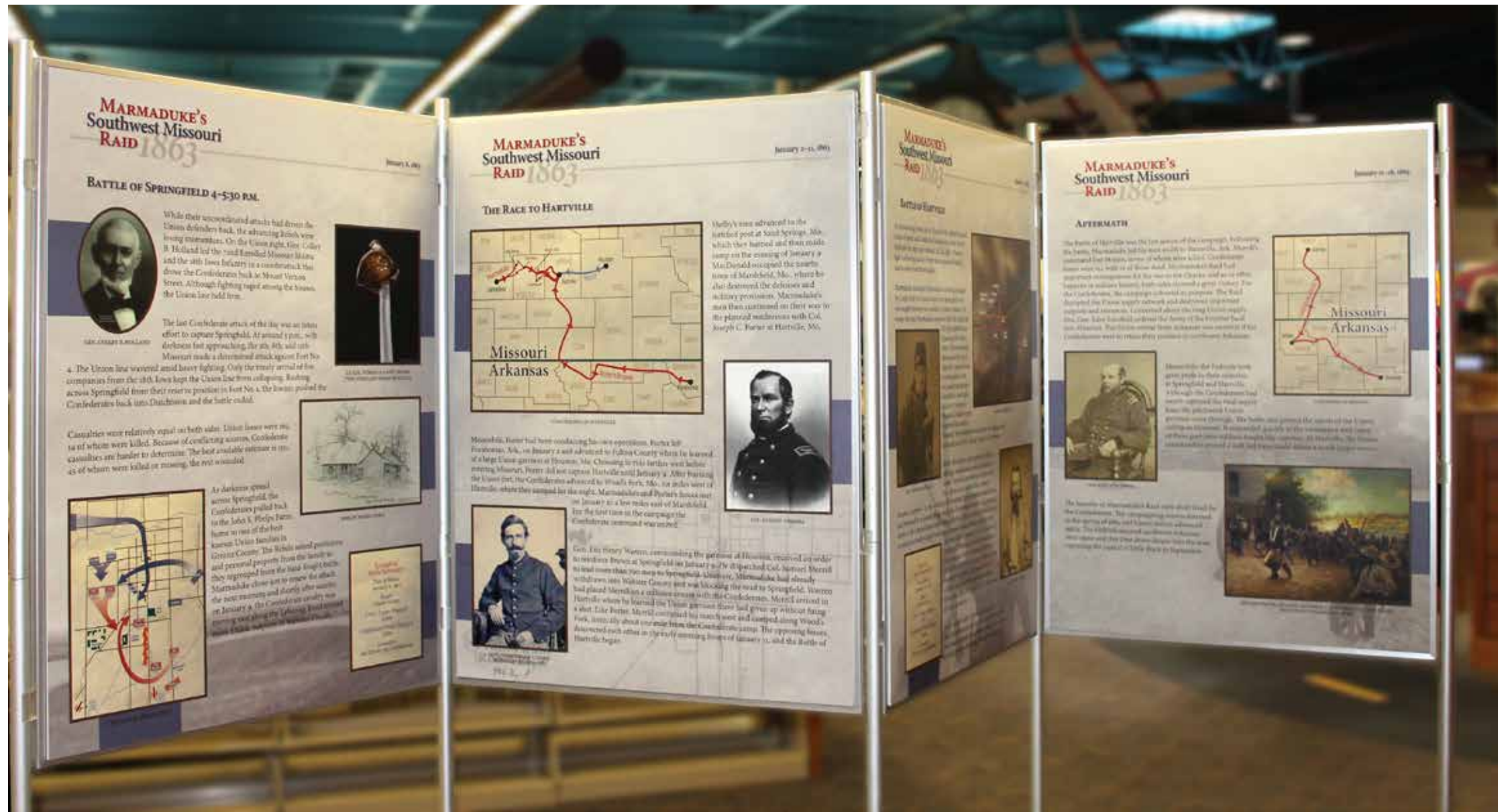
Col. Joseph O. Shelby



Gen. E. B. Brown



- (December 28, 1862) Army of the Frontier at Prairie Grove, Ark., raided and captured a Confederate supply depot at Van Buren, Ark.
- (December 31) Col. Joseph Shelby's Cavalry Brigade left Lewisburg, Ark., reaching Yellville, Ark., on January 4, 1863.
- (January 2, 1863) Col. Joseph Porter's Brigade moved west from Pochontas, Ark. They learned of a large Union force in Howell County, Mo., and swung farther west to march into Missouri.
- (January 8) Porter's Brigade reached Hartville, Mo., and destroyed Union fortifications in the town.
- (January 6) Shelby's Brigade reached Forsyth, Mo., and split into two columns.
- (January 7) Col. Emmett MacDonald's Command captured Lawrence's Mill.
- (January 7) Shelby's Brigade raided and burned Ozark, Mo.
- (January 8) MacDonald rejoined Shelby for Battle of Springfield, Mo.
- (January 9) Merrill's forces marched from Houston, Mo., towards Hartville.
- (January 9) Shelby's Brigade retreated east to Sand Springs and Marshfield, Mo.
- (January 10) Shelby and Porter's Brigades met east of Marshfield.
- (January 11) Confederate and Union forces raced towards Hartville; Battle of Hartville
- (January 12) Confederate forces retreated to Batesville, Ark.



MARMADUKE'S Southwest Missouri RAID 1863

January 11-18, 1863

AFTERMATH

The Battle of Hartville was the last action of the campaign. Following the battle, Marmaduke led his men south to Batesville, Ark. Merrill's command lost 78 men, seven of whom were killed. Confederate losses were 111, with 12 of those dead. Marmaduke's Raid had important consequences for the war in the Ozarks, and as so often happens in military history, both sides claimed a great victory. For the Confederates, the campaign achieved its purpose. The Raid disrupted the Union supply network and destroyed important outposts and resources. Concerned about the long Union supply line, Gen. John Schofield ordered the Army of the Frontier back into Missouri. This Union retreat from Arkansas was essential if the Confederates were to retain their position in northwest Arkansas.



GEN. JOHN SCHOFIELD

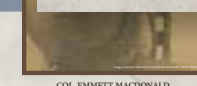
Meanwhile, the Federals took great pride in their victories at Springfield and Hartville. Although the Confederates had nearly captured the vital supply base, the patchwork Union garrison came through. The battle also proved the worth of the Union militia in Missouri. It responded quickly to the emergency and many of these part-time soldiers fought like veterans. At Hartville, the Union commanders proved a well-led force could defeat a much larger enemy.



3RD MINNESOTA INFANTRY ENTERING CAPTURED LITTLE ROCK, ARK. PAINTING BY STANLEY AUTHORS

The benefits of Marmaduke's Raid were short lived for the Confederates. The campaigning season resumed in the spring of 1863 and Union armies advanced again. The Federals secured northwest Arkansas once again and this time drove deeper into the state, capturing the capital at Little Rock in September.

As a li de j fins Me by wa esc



COL. EMMETT MACDONALD

Shelby attacked the Union position without making a reconnaissance and admitted his troops "received a terrible and well-directed fire, which was so sudden that it almost became a surprise." As the withering fire dissipated, the Confederates pulled back and prepared for a second attack. Seeing the Union wagon train moving east and north to the Lebanon Road and thinking they had won the battle, Porter advanced in pursuit to Shelby's right. Porter was surprised to find artillery and part of the 21st Iowa Infantry under Lt. Col. Cornelius W. Dunlap still holding firm. Just 50 yards from the Union line, Porter dismounted his men. This action, at such close range, made his men especially vulnerable. The Iowans delivered a destructive volley that mortally wounded Porter and killed Wimer, and the Confederates fell back in disarray.



COL. JOSEPH O. SHELBY

Hartville Battle Summary:
 Date of Battle: January 11, 1863
 Result: Union Victory
 Union Troops Engaged: 800
 Confederate Troops Engaged: 2,400
 Casualties: 78 Union; 111 Confederate

Mc... Pocahontas, Ark., on January 2 and advanced to Fulton County where he learned of a large Union garrison at Houston, Mo. Choosing to ride farther west before entering Missouri, Porter did not capture Hartville until January 9. After burning the Union fort, the Confederates advanced to Wood's Fork, Mo., six miles west of Hartville, where they camped for the night. Marmaduke's and Porter's forces met on January 10 a few miles east of Marshfield. For the first time in the campaign the Confederate command was united.



COL. SAMUEL MERRILL

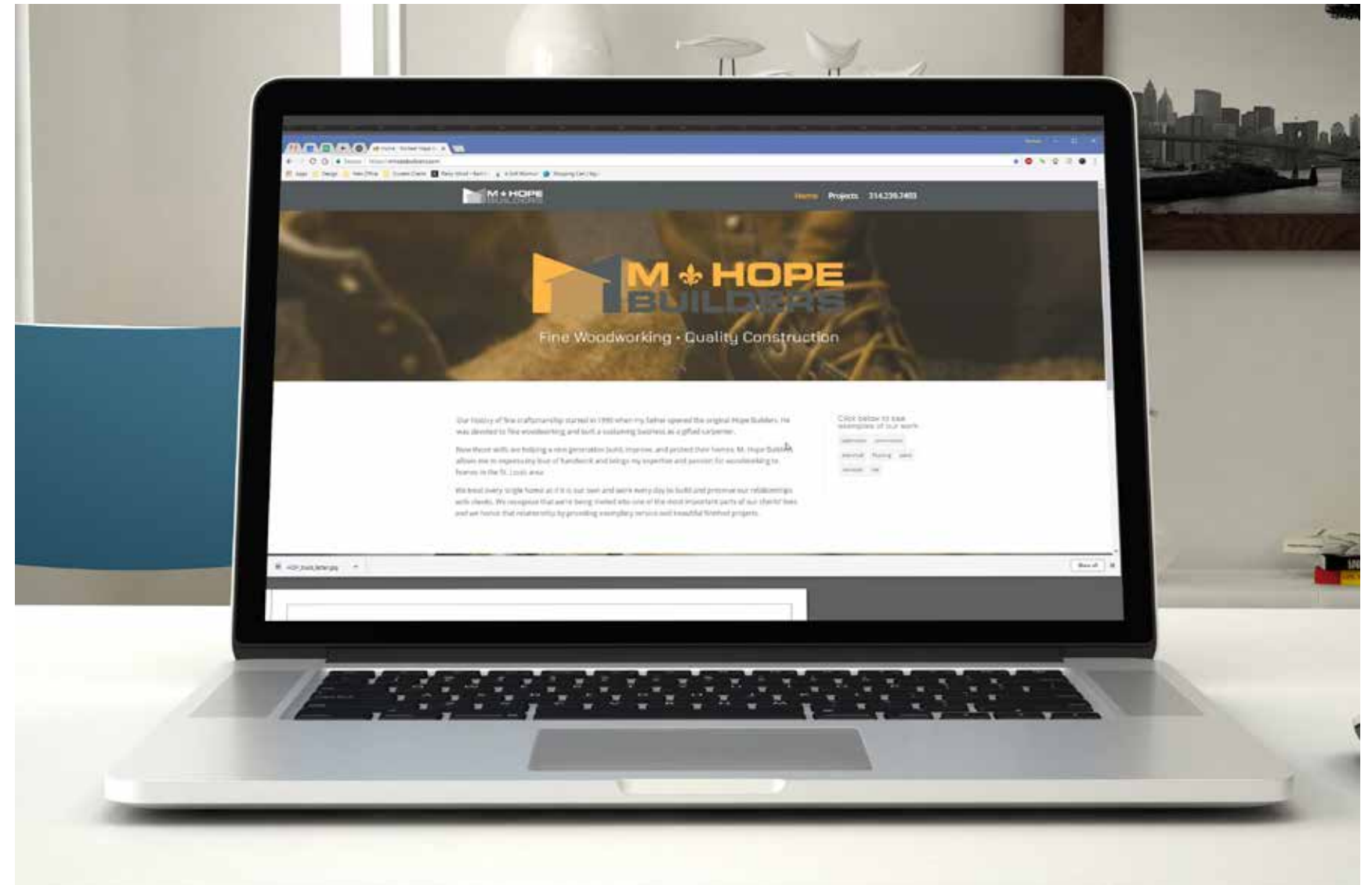


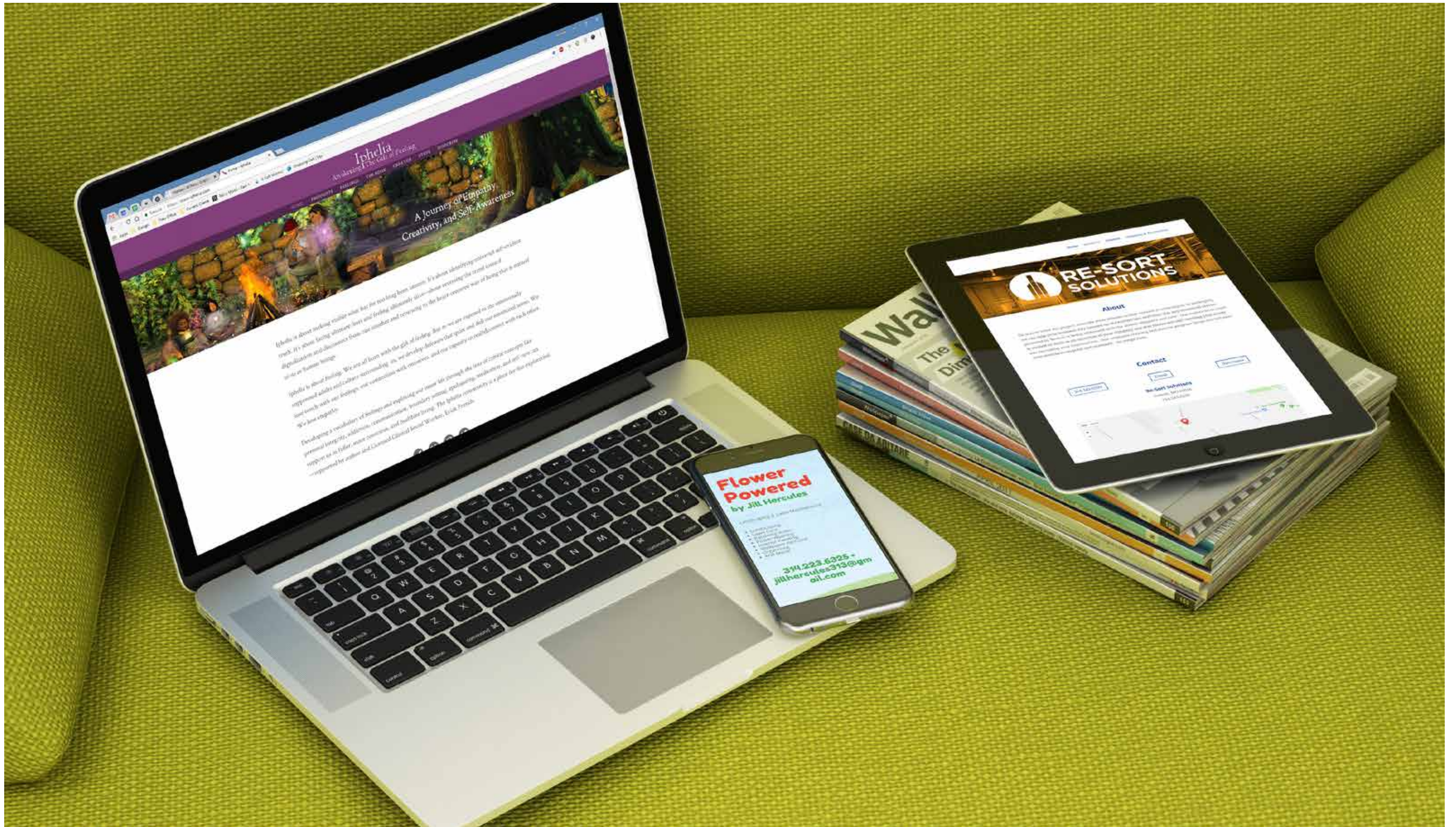
PVT. CHRISTOPHER TURNER 99TH ILLINOIS INFANTRY

Gen. Fitz Henry Warren, commanding the garrison at Houston, received an order to reinforce Brown at Springfield on January 9. He dispatched Col. Samuel Merrill to lead more than 700 men to Springfield. Unaware, Marmaduke had already withdrawn into Webster County and was blocking the road to Springfield. Warren had placed Merrill on a collision course with the Confederates. Merrill arrived in Hartville where he learned the Union garrison there had given up without firing a shot. Like Porter, Merrill continued his march west and camped along Wood's Fork, ironically about one mile from the Confederate camp. The opposing forces discovered each other in the early morning hours of January 11, and the Battle of Hartville began.

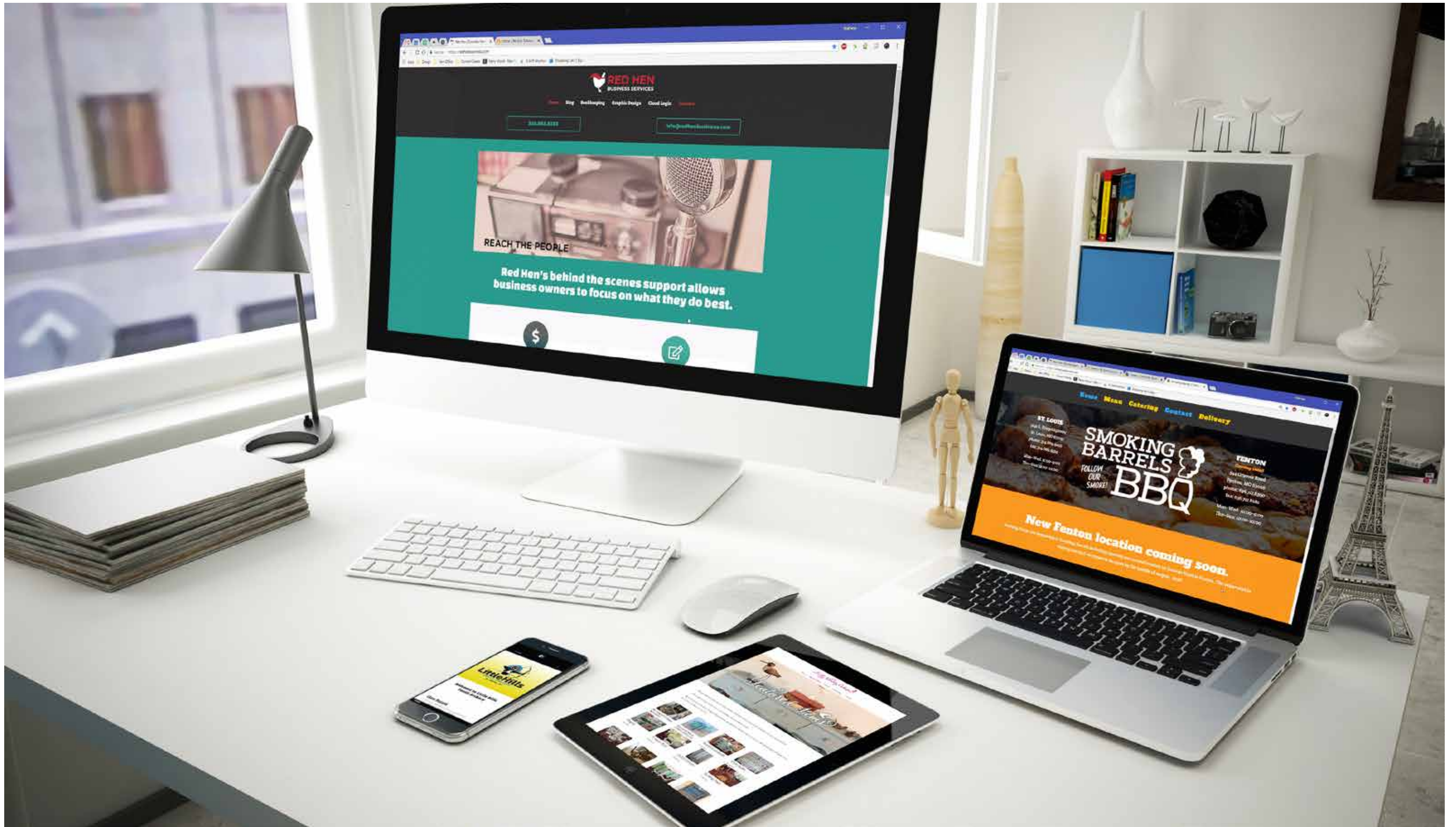


Brand identity and assets






Web sites



Web sites



OVER THERE
 Missouri and the Great War

Over There: Missouri and the Great War is a statewide digitization project that will document Missouri's World War I history. Over 156,000 Missourians served in the War and numerous factories and farmers supported the war effort.

The project is made possible by a Library Services and Technology Act Digital Imaging Grant funded by the Institute of Museum and Library Services and coordinated by the Missouri State Library.

PROJECT PARTNERS

Missouri History Museum, St. Louis, Mo. Missouri State Archives, Jefferson City, Mo. Museum of Osteopathic Medicine SM, Kirksville, Mo.	National World War I Museum, Kansas City, Mo. State Historical Society of Missouri, Columbia, Mo. Springfield-Greene County Library District, Springfield, Mo.
---	--

To learn more about the project visit missourioverthere.org or find us on 



World War I digitization project campaign poster, postcard, and business card





Business Card Designs



ST. LOUIS
SKIN SOLUTIONS
MEAGHAN DETTERMAN
PRACTICE MANAGER
13181 MARSHALL RD. STE. 200 ST. LOUIS, MO 63141
314.543.4015
MEAGHAN@STLOUISSKIN.COM • STLOUISSKIN.COM

RED HEN
BUSINESS SERVICES
Mat Wilken
Graphic and Web Design
Visual Communication Hen
314.492.4343 ext. 704
mat@redhenbusiness.com
redhenbusiness.com

thinnergy
MEDICAL
WEIGHT LOSS
Dr. Elizabeth Laffey
755 South New Ballas Road, Suite 120 • St. Louis, MO 63141
thinnergymd.com • 314.665.3016

ST. LOUIS
SKIN SOLUTIONS
MEAGHAN DETTERMAN
PRACTICE MANAGER
13181 MARSHALL RD. STE. 200 ST. LOUIS, MO 63141
314.543.4015
MEAGHAN@STLOUISSKIN.COM • STLOUISSKIN.COM

RED HEN
BUSINESS SERVICES
Mat Wilken
Graphic and Web Design
Visual Communication Hen
314.492.4343 ext. 704
mat@redhenbusiness.com
redhenbusiness.com

RED HEN
BUSINESS SERVICES
Mat Wilken
Graphic and Web Design
Visual Communication Hen
314.492.4343 ext. 704
mat@redhenbusiness.com
redhenbusiness.com

thinnergy
MEDICAL
WEIGHT LOSS
Dr. Elizabeth Laffey
755 South New Ballas Road, Suite 120 • St. Louis, MO 63141
thinnergymd.com • 314.665.3016



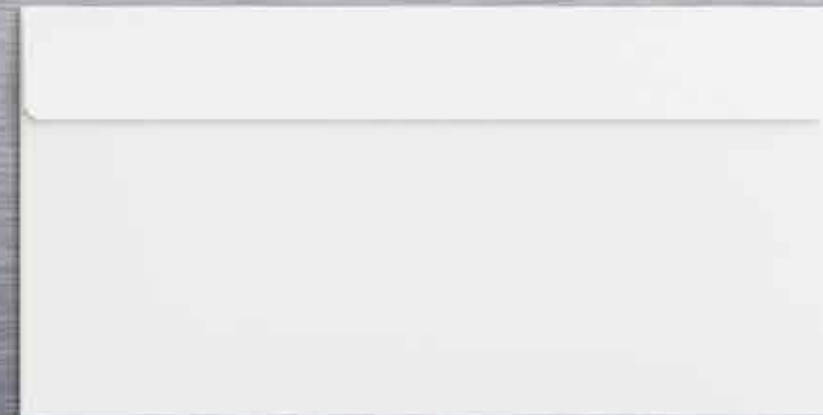
ST•LOUIS
SKIN SOLUTIONS

ST•LOUIS
SKIN SOLUTIONS

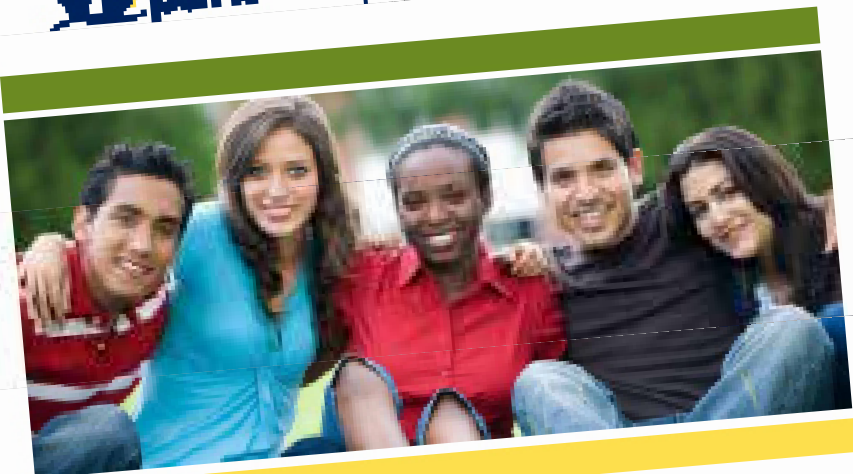


DISCOVER
YOUR OWN
BEAUTY

314.543.4015 • 13100 MANCHESTER ROAD, SUITE 250 • DES PERES, MO 63131 • WWW.STLOUISSKIN.COM

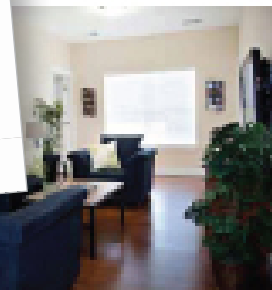
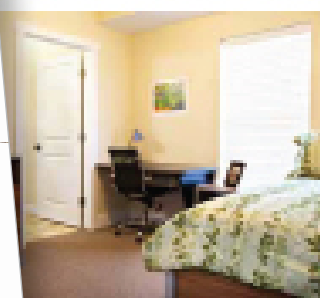
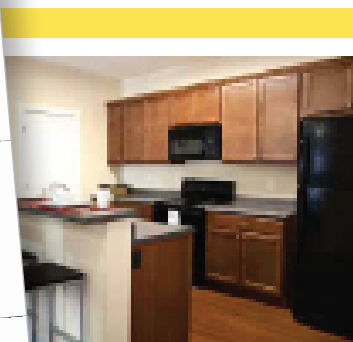


SPRINGFIELD'S STUDENT LIVING DESTINATION



Live Better, Learn Better

- Gate-controlled, Key Card Entry into the Building
- All Utilities Paid, Including Free Wi-Fi Internet



award-winning
quality and convenience



417.849.7222

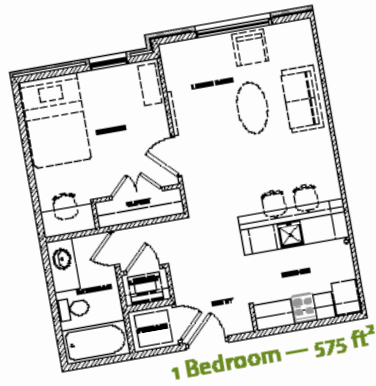
BEACON
COMMONS
Madison Street
Springfield, MO 65806
BeaconCommons.com



FLOORPLANS



415 East Monroe Street
Springfield, MO 65806
www.BeaconParkMSU.com
417.849.7222



Live Better, Learn Better



525 East Madison Street
Springfield, MO 65806
www.BeaconCommons.com
417.849.7222



Live Better, Learn Better



415 East Monroe Street
Springfield, MO 65806
www.BeaconParkMSU.com
417.849.7222

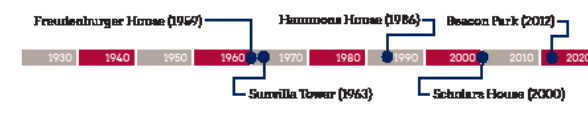
ONCAMPUS

	Beacon Park	Hammocks House	Scholar House	Survilla Tower	Freudenburger House
Fully Furnished	✓	✓	✓	✓	✓
Full Kitchen	✓	✓	✓	✓	✓
Microwave & Refrigerator	✓	✓	✓	✓	✓
Full Living Room	✓	✓	✓	✓	✓
Flat-screen TV	✓	✓	✓	✓	✓
Private Bedrooms	✓	✓	✓	✓	✓
Private Bathrooms	✓	✓	✓	✓	✓
Laundry in Unit	✓	✓	✓	✓	✓
Utilities, Internet, & Cable Paid	✓	✓	✓	✓	✓
Free Parking	✓	✓	✓	✓	✓

Average square feet per resident:



Year housing facilities at MSU were constructed:



415 East Monroe Street
Springfield, MO 65806
www.BeaconParkMSU.com



525 East Madison Street
Springfield, MO 65806
www.BeaconCommons.com



417.849.7222

mat

Mat Wilken · Graphic Designer

314.409.8385 ▪ mat@matwilken.com ▪ 1041 Terracewood Circle ▪ Ballwin, Missouri 63011